

Continuous Casting Technology for Oxygen Free Copper Wire Rod

- Output: 1,000 - 40,000 tonnes/year
- Rod diameter: 8.0mm - 30mm
- Oxygen content: less than 5 ppm
- Feedstock: LME grade A Cathode (BSEN 1978:1998)



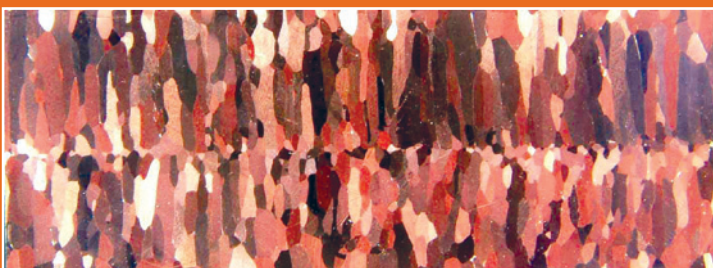
RS 3000/6

Applications

- Enamelled wires
- Superfine wires: less than 0.05mm diameter
- Data communication wires
- Telephone wires



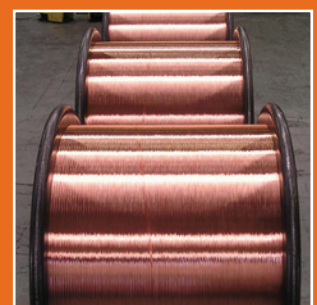
Casting station and strand withdrawal



Cu OF 8.0mm rod

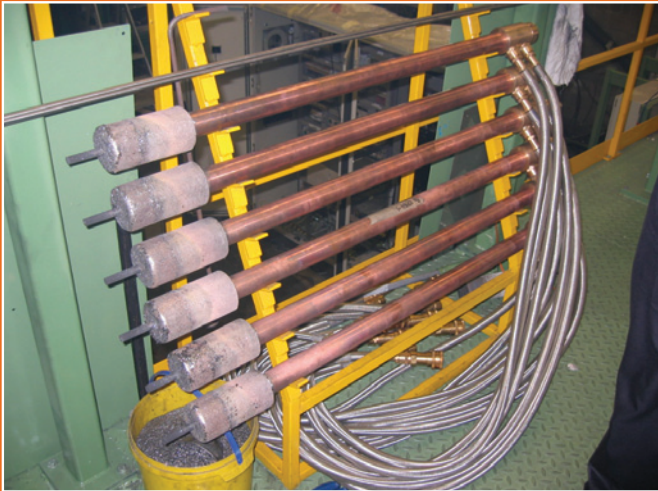


Enamelled wire



Bare wire

Continuous Casting Equipment, features



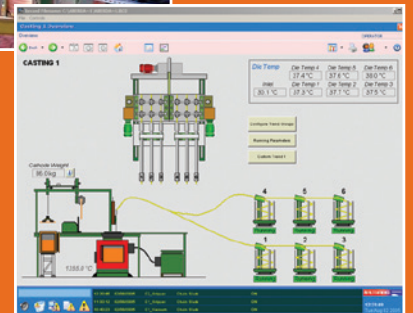
- Rautomead "Supercooler" casting die tooling



- PLC controlled coil formation
Coil weight up to 5,000 kg



- Automated cathode feed system
Manual operated system available for low volume machines



- Plant Monitoring, data recording and remote observation

Rautomead Experience

- More than 60 wire rod casting installations supplied worldwide since 1994
- More than 320 continuous casting installations supplied worldwide since 1978

Rautomead Service

- Advice for factory layout & design
- Specifications for ancillary services required
- Operator training
- Installation, start up and commissioning

Wire product images courtesy Austech Wire & Cable, Australia

Rautomead Limited, Nobel Road, Wester Gourdie Industrial Estate, Dundee DD2 4UH, Scotland, UK
Tel: +44 (0)1382 622341 Fax: +44 (0)1382 622941 email: sales@rautomead.com

www.rautomead.com

rautomead